

From: David Whittle, Director of Strategy, Policy, Relationships and Corporate Assurance, KCC
Akua Agyepong, Assistant Director, Adult Social Care and Health, KCC
Florah Shiringo, Director, Children, Young People and Education, KCC

To: Kent Community Safety Partnership

Date: 12th July 2023

Subject: Kent and Medway Domestic Abuse Strategy 2024 – 2029: pre consultation.

Summary:

The Kent and Medway Domestic Abuse Strategy is a partnership document managed by the Kent and Medway Domestic and Sexual Abuse Executive Group. The strategy also meets tier one requirements to complete a domestic abuse safe accommodation strategy.

The strategies aim is to *“reduce the prevalence of domestic abuse and ensure that where domestic abuse takes place, all those affected get the right support, quickly”*.

Kent County Council and Medway Council have worked with partners to develop the strategy, which is being launched for a 12 week consultation on the 24th July 2023.

An executive summary, easy read and British sign language version of the strategy will be available for the consultation.

The Community Safety Partnership are asked to:

- note the development of the strategy.
- consider the progress made report.
- consider the draft executive summary, and draft strategy.

1. Background

1.1 The Domestic and Sexual Abuse Executive Group is Chaired by Kent Police and has representation from Kent County Council, Medway Council, Kent Police, Kent Fire and Rescue Service, the National Probation Service, the NHS, DWP, Probation services and district, borough and city councils.

1.2 One of the key responsibilities of this group is to enable joint collaborative working across services which respond to those impacted by domestic abuse, to manage the development of strategy and the implementation of actions across partners. Having a partnership across services enables coordinated change and improvement.

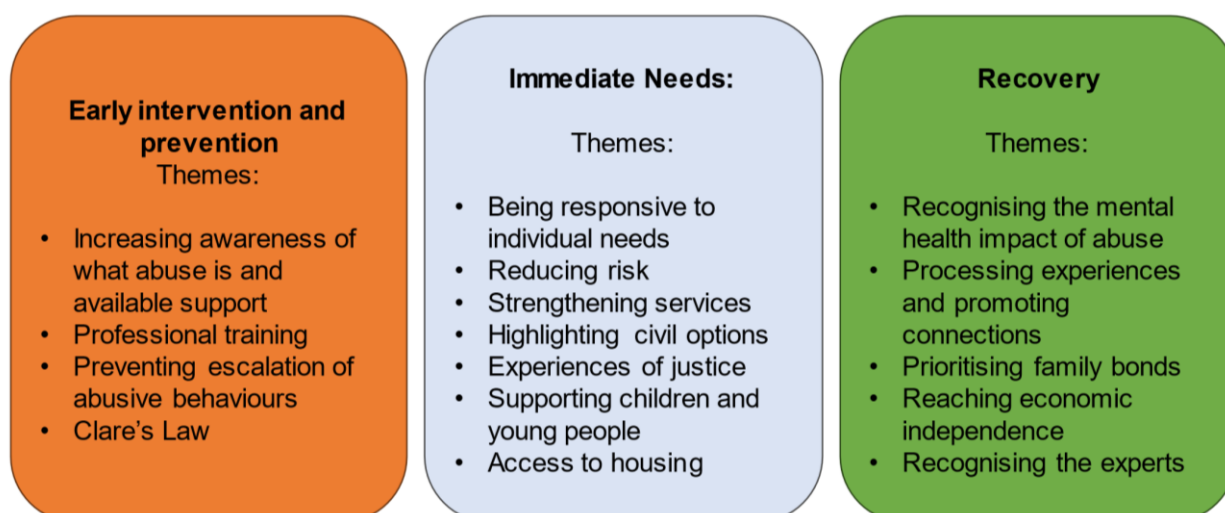
1.3 The 2020 to 2023 Domestic Abuse Strategy is ending. The Kent and Medway Domestic and Sexual Abuse Executive Group are publishing a 'progress made' report (Appendix A) which details achievements but also areas of focus moving forward which are integrated into the 2024 to 2029 strategy draft.

2. Development of the 2024 to 2029 draft strategy

2.1 Before moving to draft the strategy, officers across Kent and Medway talked to people impacted by abuse and those delivering services. Workshops were run across Medway and Kent and one to one sessions were completed. In-depth interviews and a survey provided feedback, and previous research on the experiences of men, the experiences of children and young people and of those impacted by abuse using one stop shops and refuges was utilised.

2.2 A draft executive summary (Appendix B) has been produced which will be available in British sign language and easy read for the consultation. The full draft strategy is attached as Appendix C.

2.3 The themes within the strategy have been identified using areas highlighted by those with lived experience.



- 2.4 The consultation on the strategy is being run for 12 weeks, recognising that part of this time is over summer, but also to allow engagement with as many groups as possible during the consultation period. The strategy development group are working with consultation teams across partners to identify opportunities to increase awareness of the strategy.
- 2.5 Once finalised the strategy will be supported by a delivery plan and activity indicators (detailed within the full strategy). Progress against themes will be monitored via the Kent and Medway Domestic and Sexual Abuse Executive Group and associated governance structures.

3. Conclusions and next steps

- 3.1 The 2024 to 2029 Kent and Medway Domestic Abuse Strategy seeks to strengthen coordinated partnership working and focus across services which support individuals and families being affected by domestic abuse. It seeks to provide a clear narrative and definition of improvement with partners working to the collective aim to *“reduce the prevalence of domestic abuse and ensure that where domestic abuse takes place, all those affected get the right support, quickly”*.
- 3.2 After the consultation is completed, the strategy will be refined. A ‘You Said, We Did’ will be developed and presented back to partners to gain final approval.
- 3.3 A delivery plan will be developed across the partnership to support robust monitoring against the commitments made within the strategy.

The Community Safety Partnership are asked to:

- note the development of the strategy.
- consider the progress made report.
- consider the draft executive summary, and draft strategy.

Appendix A: Progress report, 2020 – 2023 Kent and Medway Domestic Abuse Strategy.

Appendix B: draft executive summary, 2024 – 2029 Kent and Medway Domestic Abuse Strategy.

Appendix C: draft 2024 – 2029 Kent and Medway Domestic Abuse Strategy.